

[Printer-friendly version](#)



IAU Minor Planet Center

MPC Operations Status

Processing ([Info](#))

ECS: Accessible

Observer Services (NEOs)

- NEO Services Overview
- NEO Confirmation
- NEO Confirmation (RA order)
- NEO Ratings
- NEO Page
- NEO Observation Planning Aid
- NEOChecker
- NEOCMTChecker

Observer Services

- Services Overview
- IAUMail
- Minor Planet & Comet Ephem.
- Natural Satellite Ephemerides
- New Object Ephemerides
- MPCChecker
- CMTChecker
- Distant Artificial Satellites
- Observing List Customizer
- Sky Coverage

Orbital Elements

- Orbital Elements Overview
- MPCORB
- Orbital Elements for Programs
- MPCAT
- MPCUPDATE

Astrometric Observations

- MPCAT-OBS
- MPCOBS

Publications

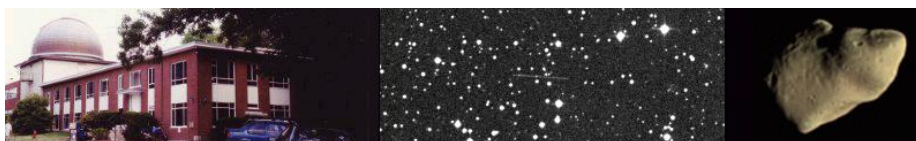
- Publications Overview
- MPECs
- MPC Archive
- MPC RSS Feeds
- CBAT RSS Feeds

Documentation

- Documentation Overview
- Minor Body Astrometry
- MPC Status Page
- What's New

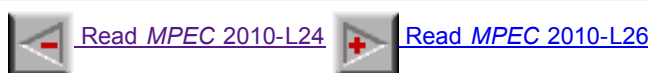
Lists and Plots

- Lists and Plots Overview
- Minor Planets



MPEC 2010-L25 : 2010 LG14

The following [Minor Planet Electronic Circular](#) may be linked-to from your own Web pages, but must **not** otherwise be [redistributed electronically](#).
A form allowing access to any MPEC is at [the bottom of this page](#).



M.P.E.C. 2010-L25

Issued 2010 June 6, 18:49 UT

The Minor Planet Electronic Circulars contain information on unusual minor planets and routine data on comets. They are published on behalf of Commission 20 of the International Astronomical Union by the Minor Planet Center, Smithsonian Astrophysical Observatory, Cambridge, MA 02138, U.S.A.

Prepared using the [Tamkin Foundation Computer Network](#)

MPC@CFA.HARVARD.EDU

URL <http://www.minorplanetcenter.org/iau/mpc.html> ISSN 1523-6714

2010 LG14

Observations:

K10L14G*	C2010	06	04.41192	00	21	29.98	+28	02	32.5	20.1	V	EL025691
K10L14G	C2010	06	04.42464	00	21	34.07	+28	03	09.0	20.0	V	EL025691
K10L14G	C2010	06	04.43734	00	21	38.37	+28	03	47.0	20.6	V	EL025691
K10L14G	C2010	06	05.40955	00	27	05.31	+28	50	35.1	20.2	V	EL025691
K10L14G	C2010	06	05.42226	00	27	09.70	+28	51	12.7	20.2	V	EL025691
K10L14G	C2010	06	05.43548	00	27	14.20	+28	51	51.4	20.1	V	EL025691
K10L14G	C2010	06	05.43684	00	27	14.63	+28	51	54.8	20.5	V	EL025291
K10L14G	C2010	06	05.44131	00	27	16.12	+28	52	07.9	20.4	V	EL025291
K10L14G	C2010	06	05.44666	00	27	17.95	+28	52	23.3	20.3	V	EL025291
K10L14G	JC2010	06	06.43639200	33	02.60	+29	40	02.7				EL025695
K10L14G	JC2010	06	06.43980000	33	03.80	+29	40	12.3				EL025695
K10L14G	JC2010	06	06.44151200	33	04.38	+29	40	17.3				EL025695
K10L14G	tC2010	06	06.45198	00	33	08.15	+29	40	48.3	21.5	V	EL025291
K10L14G	tC2010	06	06.45629	00	33	09.56	+29	41	00.2	21.3	V	EL025291

Observer details:

[291 LPL/Spacewatch II.](#) Observer J. V. Scotti. 1.8-m f/2.7 reflector + CCD.
[691 Steward Observatory, Kitt Peak.](#) Observer J. V. Scotti. 0.9-m f/3 reflector + CCD.
[695 Kitt Peak.](#) Observers M. Trueblood, R. Crawford. Measurer R. Crawford. 0.9-m f/8 Ritchey-Chretien + CCD.

Orbital elements:

2010 LG14										Earth MOID = 0.3213 AU	
Epoch 2010 July 23.0 TT = JDT 2455400.5										MPC	
M	358.82757		(2000.0)			P			Q		
n	1.00783404	Peri.	185.21188			-0.08007979			-0.82653556		
a	0.9852430	Node	270.26740			+0.93348831			+0.13382796		
e	0.7393310	Incl.	33.85997			+0.34955229			-0.54674404		
P	0.98	H	18.3			G	0.15		U	9	
Residuals in seconds of arc											
100604	691	0.4+	0.0	100605	691	0.4+	0.4+	100606	695	0.0	0.2-
100604	691	1.0-	0.5-	100605	291	0.0	0.1-	100606	695	0.3-	0.2-

Comets	100604	691	0.6+	0.5+	100605	291	0.4-	0.0	100606	291	0.7+	0.4+
Animations	100605	691	0.2-	0.4-	100605	291	0.3-	0.2-	100606	291	0.7-	0.3-
	100605	691	0.5+	0.2+	100606	695	0.1+	0.1+				
General Information												
Astronomical Headlines	Ephemeris:											
Press Information Sheets	2010 LG14 a,e,i = 0.99, 0.74, 34 q = 0.2568											
General	Date	TT	R. A. (2000)	Decl.	Delta	r	Elong.	Phase	V			
Contact Us	2010 06 03		00 13.89	+26 54.7	1.035	1.034	60.6	58.7	20.6			
Index	2010 06 13		01 16.51	+34 47.1	0.954	0.904	54.5	66.2	20.3			
Site Map	2010 06 23		02 43.24	+40 40.2	0.924	0.755	45.5	73.7	20.1			
Search Site	2010 09 11		13 04.31	-19 31.4	1.626	1.005	36.0	36.1	20.8			
Tech Info	2010 09 21		13 45.80	-21 55.6	1.768	1.123	36.0	31.7	21.1			
Documentation	2011 02 28		20 16.17	-13 59.4	2.345	1.653	36.2	20.7	22.3			
Links	2011 03 10		20 35.78	-11 39.2	2.230	1.618	41.1	23.8	22.2			
Minor Planet Center	2011 03 20		20 55.62	-09 00.3	2.101	1.575	45.7	26.9	22.1			
Central Bureau for Astro. Tel.	2011 03 30		21 15.98	-05 59.4	1.962	1.524	49.9	30.1	22.0			
<i>International Comet Quarterly</i>	2011 04 09		21 37.26	-02 31.8	1.814	1.464	53.7	33.5	21.8			
Smithsonian Astro. Obs.	2011 04 19		22 00.06	+01 28.3	1.662	1.394	56.8	37.1	21.6			
	2011 04 29		22 25.32	+06 08.6	1.510	1.313	59.0	41.1	21.4			
	2011 05 09		22 54.54	+11 37.7	1.361	1.222	59.9	45.6	21.1			
	2011 05 19		23 30.14	+18 01.5	1.225	1.118	59.1	50.9	20.9			
	2011 05 29		00 16.15	+25 13.5	1.110	0.999	55.9	57.2	20.6			
	2011 06 08		01 18.47	+32 28.7	1.030	0.864	50.0	64.1	20.3			
	2011 06 18		02 42.34	+37 47.7	1.003	0.710	41.2	70.4	20.0			

Carl W. Hergenrother

(C) Copyright 2010 MPC

M.P.E.C. 2010-L25



Display MPEC number: Clear

Enter an [MPEC](#) number in one of the following forms:

- 1997-B01 (the full form)
- J97B01 (the packed version of the full form)
- B01 (the abbreviated form)

YAHOO!
BABEL FISH


Choose a language to translate this page!



Select to language

Google Translate

Select Language

 [Gadgets powered by Google](#)

